

# Marketwatch Report

## Q3-2011

---

A FREE RESEARCH TOOL FROM THE  
ARIZONA REGIONAL MULTIPLE LISTING SERVICE, INC.



## Counties

(Click any county name to jump to that page)

---

All Counties Overview	2
Maricopa County	3
Pinal County	8

# Marketwatch Report

## Q3-2011



## All Counties Overview

	Median Sales Price		Average Sales Price		Pct. of List Price Rec'd.		Days on Market		Closed Sales	
	Q3-2011	1-Yr Chg	Q3-2011	1-Yr Chg	Q3-2011	1-Yr Chg	Q3-2011	1-Yr Chg	Q3-2011	1-Yr Chg
Maricopa	\$115,000	↓ - 8.0%	\$158,320	↓ - 9.0%	98.5%	↑ + 1.7%	66	↓ - 3.1%	22,597	↑ + 24.4%
Pinal	\$85,000	↓ - 9.6%	\$97,270	↓ - 8.3%	98.8%	↑ + 1.5%	63	↓ - 0.8%	2,419	↑ + 12.1%

# Marketwatch Report

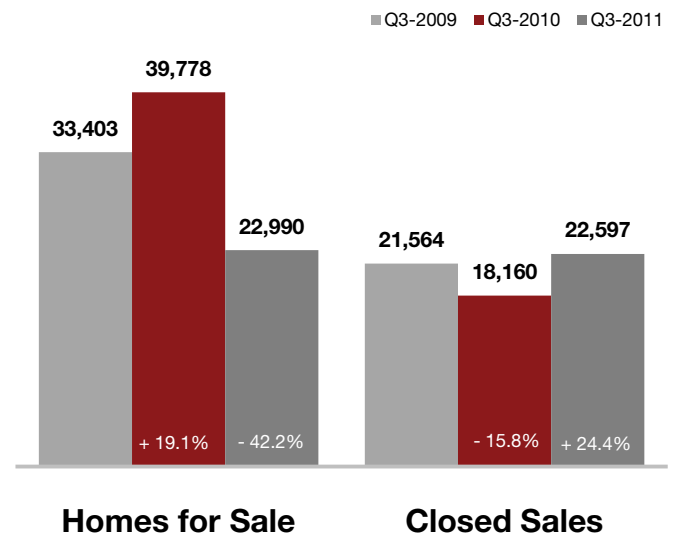
## Q3-2011



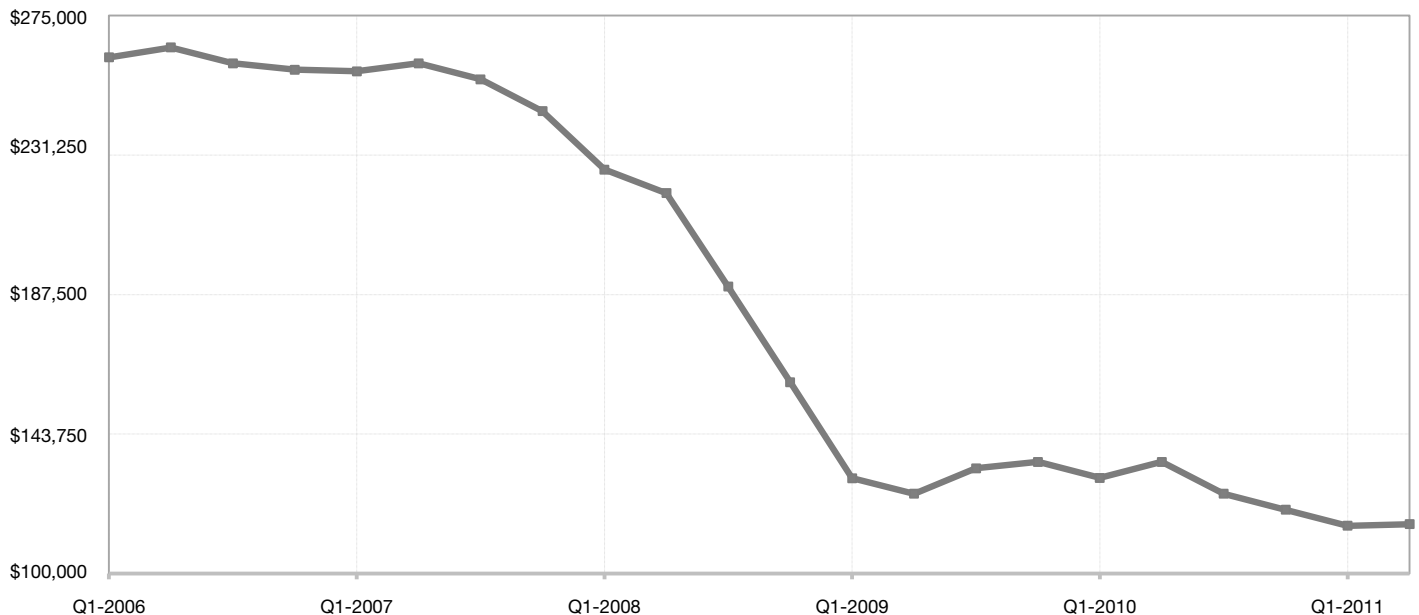
## Maricopa County

Key Metrics	Q3-2011	1-Yr Chg
Median Sales Price	\$115,000	- 8.0%
Average Sales Price	\$158,320	- 9.0%
Pct. of List Price Rec'd.	98.5%	+ 1.7%
Homes for Sale	22,990	- 42.2%
Closed Sales	22,597	+ 24.4%
Months Supply	3.1	- 49.8%
Days on Market	66	- 3.1%

## Market Activity



## Historical Median Sales Price for Maricopa County



# Marketwatch Report

## Q3-2011



# Maricopa County ZIP Codes

	Median Sales Price		Average Sales Price		Pct. of List Price Rec'd.		Days on Market		Closed Sales	
	Q3-2011	1-Yr Chg	Q3-2011	1-Yr Chg	Q3-2011	1-Yr Chg	Q3-2011	1-Yr Chg	Q3-2011	1-Yr Chg
85001	\$45,000	↓ - 21.5%	\$45,000	↓ - 35.7%	100.0%	↑ + 5.3%	3	↓ - 87.6%	1	↓ - 75.0%
85003	\$175,000	↓ - 16.7%	\$206,515	↑ + 0.5%	95.1%	↑ + 1.2%	70	↓ - 16.5%	42	↑ + 55.6%
85004	\$125,500	↓ - 11.6%	\$138,097	↓ - 1.4%	96.2%	↑ + 1.8%	116	↑ + 164.1%	27	↑ + 42.1%
85006	\$49,000	↓ - 34.7%	\$68,496	↓ - 27.4%	99.1%	↑ + 3.4%	52	↓ - 25.5%	88	↑ + 8.6%
85007	\$103,000	↑ + 24.1%	\$150,866	→ + 0.0%	96.7%	↓ - 0.1%	83	↑ + 5.0%	47	↑ + 46.9%
85008	\$55,000	↑ + 6.3%	\$69,781	↑ + 4.3%	99.0%	↑ + 3.8%	57	↓ - 12.9%	156	↑ + 15.6%
85009	\$25,000	→ 0.0%	\$29,938	↑ + 3.2%	102.4%	↑ + 7.4%	43	↓ - 26.2%	102	→ 0.0%
85012	\$142,150	↑ + 133.0%	\$191,337	↓ - 5.8%	97.4%	↑ + 4.4%	78	↓ - 21.6%	50	↑ + 31.6%
85013	\$100,200	↑ + 4.4%	\$121,587	↓ - 5.0%	98.0%	↑ + 2.4%	69	↑ + 17.5%	126	↑ + 28.6%
85014	\$85,000	↑ + 20.6%	\$115,297	↑ + 14.5%	96.7%	↑ + 0.8%	73	↓ - 0.5%	109	↑ + 2.8%
85015	\$49,950	↓ - 23.2%	\$60,329	↓ - 13.8%	98.4%	↑ + 4.7%	53	↓ - 25.5%	158	↑ + 30.6%
85016	\$115,000	↑ + 20.4%	\$203,807	↑ + 19.2%	97.6%	↑ + 3.2%	78	↓ - 9.7%	202	↑ + 29.5%
85017	\$33,000	↓ - 8.3%	\$35,814	↓ - 17.3%	102.8%	↑ + 6.5%	51	↓ - 16.7%	118	↑ + 7.3%
85018	\$165,000	↓ - 17.5%	\$241,072	↓ - 20.0%	95.8%	↑ + 0.8%	69	↓ - 18.7%	222	↑ + 47.0%
85019	\$39,500	↓ - 10.0%	\$42,438	↓ - 9.4%	101.4%	↑ + 6.1%	51	↓ - 27.0%	109	↑ + 2.8%
85020	\$83,000	↓ - 10.0%	\$135,012	↓ - 6.3%	97.3%	↑ + 1.7%	71	↑ + 4.4%	182	↑ + 26.4%
85021	\$67,500	↑ + 1.3%	\$132,980	↑ + 0.3%	97.2%	↑ + 2.9%	72	↑ + 4.2%	113	↑ + 7.6%
85022	\$102,500	↓ - 12.4%	\$126,552	↓ - 16.3%	98.0%	↑ + 2.0%	72	↑ + 20.6%	250	↑ + 34.4%
85023	\$87,000	↓ - 10.8%	\$115,993	↓ - 2.4%	98.6%	↑ + 3.5%	67	↓ - 11.6%	183	↑ + 60.5%
85024	\$133,000	↓ - 21.5%	\$145,561	↓ - 19.0%	98.6%	↑ + 2.7%	60	↓ - 1.0%	179	↑ + 49.2%
85027	\$79,900	↓ - 11.1%	\$83,735	↓ - 9.0%	98.8%	↑ + 2.9%	58	↓ - 6.2%	275	↑ + 66.7%
85028	\$191,191	↑ + 0.6%	\$227,144	↓ - 4.0%	96.6%	↑ + 0.6%	81	↑ + 6.8%	109	↑ + 28.2%
85029	\$60,000	↓ - 16.1%	\$69,471	↓ - 9.1%	98.9%	↑ + 1.0%	66	↑ + 10.6%	209	↑ + 23.7%
85031	\$35,500	↓ - 1.4%	\$36,483	↓ - 6.0%	102.8%	↑ + 5.7%	40	↓ - 18.6%	101	↑ + 6.3%
85032	\$97,000	↓ - 7.6%	\$114,962	↓ - 5.4%	98.1%	↑ + 1.4%	67	↑ + 11.7%	412	↑ + 39.2%
85033	\$38,000	↓ - 5.0%	\$41,083	↓ - 8.4%	102.8%	↑ + 8.5%	48	↓ - 16.9%	232	↑ + 14.9%
85034	\$75,000	↑ + 38.5%	\$69,429	↑ + 29.1%	95.6%	↓ - 2.9%	43	↓ - 22.3%	7	↑ + 16.7%
85035	\$35,500	↓ - 1.4%	\$36,906	↓ - 8.2%	104.1%	↑ + 8.2%	39	↓ - 30.5%	144	↑ + 6.7%
85037	\$62,000	↓ - 12.7%	\$64,584	↓ - 13.0%	100.7%	↑ + 2.3%	48	↑ + 2.1%	323	↑ + 16.6%
85040	\$41,750	↓ - 26.8%	\$50,477	↓ - 24.2%	99.3%	↑ + 4.6%	66	↑ + 16.4%	133	↑ + 6.4%
85041	\$75,000	↓ - 15.7%	\$82,421	↓ - 13.8%	100.1%	↑ + 2.3%	70	↑ + 18.8%	400	↑ + 50.9%
85042	\$75,000	↓ - 15.7%	\$94,102	↓ - 13.6%	100.4%	↑ + 1.9%	74	↑ + 7.1%	194	↑ + 19.0%
85043	\$66,600	↓ - 14.1%	\$72,954	↓ - 10.0%	99.6%	↑ + 1.0%	55	↓ - 16.8%	218	↑ + 32.1%
85044	\$149,450	↓ - 14.6%	\$186,801	↓ - 8.1%	97.8%	↑ + 2.1%	81	↓ - 2.6%	186	↑ + 44.2%
85045	\$250,500	↓ - 11.1%	\$283,481	↓ - 6.0%	98.2%	↑ + 2.0%	77	↓ - 23.0%	48	↑ + 20.0%
85048	\$180,000	↓ - 5.3%	\$235,522	↑ + 3.1%	98.7%	↑ + 1.3%	72	↑ + 11.1%	215	↓ - 3.2%
85050	\$204,000	↓ - 13.6%	\$243,858	↓ - 14.4%	97.7%	↑ + 0.9%	59	↓ - 4.8%	172	↑ + 56.4%
85051	\$50,000	↓ - 21.2%	\$57,556	↓ - 15.9%	99.3%	↑ + 1.4%	65	↑ + 30.9%	238	↑ + 45.1%
85053	\$80,000	↑ + 6.2%	\$88,516	↓ - 0.5%	99.2%	↑ + 1.0%	54	↓ - 0.1%	161	↑ + 22.0%
85054	\$225,000	↑ + 40.6%	\$247,999	↑ + 24.2%	99.0%	↑ + 2.7%	57	↓ - 1.4%	31	↓ - 11.4%
85083	\$185,000	↓ - 11.5%	\$211,899	↓ - 8.4%	98.5%	↓ - 0.3%	63	↓ - 41.6%	129	↑ + 21.7%
85085	\$202,500	↓ - 8.4%	\$232,755	↓ - 3.2%	98.5%	↑ + 0.4%	57	↑ + 3.5%	136	↓ - 4.9%
85086	\$183,000	↓ - 11.4%	\$216,790	↓ - 6.6%	98.5%	↑ + 0.8%	53	↓ - 22.9%	307	↓ - 9.2%

# Marketwatch Report

## Q3-2011



# Maricopa County ZIP Codes Cont.

	Median Sales Price		Average Sales Price		Pct. of List Price Rec'd.		Days on Market		Closed Sales	
	Q3-2011	1-Yr Chg	Q3-2011	1-Yr Chg	Q3-2011	1-Yr Chg	Q3-2011	1-Yr Chg	Q3-2011	1-Yr Chg
85087	\$190,000	↑ + 5.6%	\$189,193	↑ + 1.2%	97.0%	↓ - 1.3%	72	↓ - 11.4%	63	↑ + 37.0%
85120	\$72,000	↓ - 15.2%	\$77,785	↓ - 12.3%	98.8%	↑ + 2.3%	50	↓ - 3.3%	95	↑ + 10.5%
85122	\$85,000	↓ - 7.3%	\$88,650	↓ - 2.7%	98.1%	↑ + 0.6%	63	↑ + 22.2%	267	↑ + 14.1%
85132	\$67,000	↓ - 2.5%	\$80,742	↓ - 7.7%	97.1%	↓ - 0.8%	85	↑ + 51.5%	139	↑ + 20.9%
85138	\$86,000	↓ - 18.1%	\$96,406	↓ - 13.9%	100.5%	↑ + 3.4%	59	↓ - 2.9%	449	↑ + 36.9%
85139	\$84,000	↓ - 1.2%	\$90,596	↓ - 5.0%	99.6%	↑ + 1.7%	64	↑ + 15.6%	192	↑ + 38.1%
85140	\$88,600	↓ - 15.6%	\$93,694	↓ - 16.3%	99.1%	↑ + 0.9%	51	↓ - 18.4%	270	↑ + 26.2%
85142	\$135,000	↓ - 3.4%	\$156,649	↓ - 2.9%	98.6%	↑ + 0.7%	58	↑ + 2.0%	383	↑ + 16.8%
85143	\$93,000	↓ - 4.1%	\$100,326	↓ - 5.0%	99.9%	↑ + 2.1%	60	↑ + 5.8%	441	↑ + 31.6%
85201	\$51,000	↓ - 10.5%	\$60,934	↓ - 14.6%	98.7%	↑ + 3.7%	59	↓ - 6.6%	159	↑ + 22.3%
85202	\$71,000	↓ - 21.1%	\$87,357	↓ - 10.9%	98.5%	↑ + 1.3%	44	↓ - 23.3%	170	↑ + 40.5%
85203	\$84,575	↓ - 19.1%	\$102,874	↓ - 9.6%	99.3%	↑ + 4.7%	65	↓ - 0.9%	140	↑ + 40.0%
85204	\$72,000	↓ - 15.3%	\$79,109	↓ - 14.0%	99.6%	↑ + 3.1%	50	↓ - 20.0%	295	↑ + 54.5%
85205	\$96,500	↓ - 5.3%	\$118,162	↓ - 14.6%	98.9%	↑ + 3.3%	65	↓ - 0.6%	209	↑ + 49.3%
85206	\$110,000	↓ - 15.4%	\$116,152	↓ - 16.7%	96.6%	↑ + 1.7%	83	↓ - 6.1%	167	↑ + 35.8%
85207	\$118,000	↓ - 23.1%	\$185,640	↓ - 25.4%	98.6%	↑ + 3.1%	67	↓ - 13.3%	255	↑ + 13.8%
85208	\$85,600	↓ - 13.1%	\$86,970	↓ - 7.8%	98.8%	↑ + 2.8%	65	↓ - 5.3%	211	↑ + 35.3%
85209	\$124,950	↓ - 3.9%	\$138,883	↓ - 2.2%	98.3%	↑ + 1.3%	56	↓ - 15.2%	202	↑ + 4.1%
85210	\$72,000	↑ + 30.9%	\$85,759	↑ + 10.0%	98.8%	↑ + 2.7%	52	↓ - 19.9%	144	↑ + 32.1%
85212	\$155,000	↓ - 6.3%	\$159,663	↓ - 8.0%	98.8%	↓ - 0.5%	68	↑ + 4.1%	182	↑ + 35.8%
85213	\$122,000	↓ - 13.2%	\$166,995	↓ - 20.4%	97.8%	↑ + 1.6%	67	↑ + 2.6%	140	↑ + 12.9%
85215	\$133,750	↓ - 21.3%	\$169,487	↓ - 16.9%	95.7%	↓ - 1.1%	99	↑ + 31.5%	80	↑ + 35.6%
85220	\$73,250	↑ + 12.7%	\$79,772	↑ + 23.5%	97.7%	⇒ - 0.0%	66	↓ - 32.6%	18	↓ - 21.7%
85224	\$115,250	↓ - 6.6%	\$127,432	↓ - 3.7%	98.7%	↑ + 1.4%	54	↓ - 17.7%	266	↑ + 44.6%
85225	\$107,500	↓ - 13.9%	\$112,552	↓ - 8.1%	99.2%	↑ + 2.2%	57	↓ - 7.4%	391	↑ + 39.1%
85226	\$140,000	↓ - 10.3%	\$178,462	↑ + 3.0%	97.9%	↑ + 0.8%	64	↓ - 0.8%	174	↑ + 38.1%
85233	\$145,500	↓ - 10.0%	\$160,562	↓ - 11.8%	98.6%	↑ + 1.8%	59	↓ - 14.8%	224	↑ + 40.0%
85234	\$153,000	↓ - 12.6%	\$178,218	↓ - 8.4%	98.2%	↑ + 0.9%	61	↑ + 5.1%	282	↑ + 34.9%
85236	\$179,990	↑ + 16.2%	\$158,660	↑ + 8.2%	100.1%	↑ + 1.9%	28	↓ - 32.0%	3	⇒ 0.0%
85239	\$67,000	↓ - 20.9%	\$74,718	↓ - 15.8%	96.1%	↑ + 2.1%	174	↑ + 120.9%	11	↓ - 57.7%
85242	\$124,500	↑ + 19.2%	\$149,696	↑ + 3.0%	98.1%	↑ + 0.5%	97	↓ - 11.6%	19	↓ - 62.0%
85248	\$224,000	↓ - 4.7%	\$260,789	↑ + 4.8%	96.3%	↑ + 1.3%	88	↑ + 3.9%	171	↓ - 1.2%
85249	\$255,000	↓ - 5.4%	\$262,578	↓ - 12.0%	98.3%	↑ + 1.4%	69	↓ - 12.5%	286	↑ + 33.6%
85250	\$135,000	↓ - 20.6%	\$157,792	↓ - 25.4%	96.7%	↑ + 2.1%	68	↑ + 8.0%	131	↑ + 72.4%
85251	\$135,300	↑ + 34.0%	\$197,385	↑ + 7.1%	96.3%	↑ + 1.8%	76	↓ - 11.3%	276	↑ + 34.0%
85253	\$910,000	↓ - 14.7%	\$1,037,658	↓ - 24.4%	93.9%	↑ + 2.0%	131	↓ - 10.5%	110	↑ + 18.3%
85254	\$250,000	↓ - 4.1%	\$283,688	↑ + 3.7%	97.2%	↑ + 0.5%	74	↑ + 9.3%	267	↑ + 29.6%
85255	\$450,000	↑ + 5.9%	\$558,961	↓ - 0.2%	95.6%	↑ + 0.1%	94	↑ + 5.6%	315	↑ + 18.0%
85257	\$120,000	↓ - 10.7%	\$127,019	↓ - 4.8%	96.8%	↑ + 1.5%	62	↓ - 3.5%	174	↑ + 17.6%
85258	\$308,000	↑ + 14.9%	\$303,387	↑ + 8.1%	95.3%	↓ - 0.4%	81	↓ - 1.9%	157	↓ - 1.3%
85259	\$427,500	↑ + 3.0%	\$469,769	↑ + 5.8%	95.4%	⇒ + 0.0%	81	↓ - 15.9%	136	↑ + 16.2%
85260	\$235,000	↓ - 9.6%	\$281,966	↓ - 11.0%	96.9%	↑ + 0.6%	75	↓ - 3.1%	203	↑ + 6.8%
85262	\$575,000	↑ + 7.5%	\$792,200	↑ + 6.2%	93.7%	⇒ - 0.0%	132	↑ + 7.3%	136	↑ + 18.3%

# Marketwatch Report

## Q3-2011



# Maricopa County ZIP Codes Cont.

	Median Sales Price		Average Sales Price		Pct. of List Price Rec'd.		Days on Market		Closed Sales	
	Q3-2011	1-Yr Chg	Q3-2011	1-Yr Chg	Q3-2011	1-Yr Chg	Q3-2011	1-Yr Chg	Q3-2011	1-Yr Chg
85263	\$263,000	↓ - 24.9%	\$312,176	↓ - 11.2%	90.3%	↑ + 1.3%	98	↓ - 20.5%	17	↑ + 30.8%
85266	\$490,000	↓ - 16.2%	\$550,929	↓ - 10.0%	95.3%	↑ + 0.4%	113	↓ - 27.7%	77	↑ + 16.7%
85268	\$226,250	↓ - 9.5%	\$306,310	↓ - 4.4%	95.6%	↑ + 1.9%	103	↑ + 1.4%	164	↑ + 19.7%
85281	\$102,500	↓ - 29.3%	\$123,146	↓ - 24.1%	96.9%	↑ + 0.7%	80	↑ + 2.3%	172	↑ + 30.3%
85282	\$113,250	↓ - 11.2%	\$123,243	↓ - 9.3%	98.1%	↑ + 2.6%	56	↓ - 18.1%	190	↑ + 50.8%
85283	\$114,950	↓ - 21.2%	\$124,279	↓ - 19.2%	97.9%	↑ + 2.7%	61	↑ + 8.2%	168	↑ + 40.0%
85284	\$250,000	↓ - 10.1%	\$287,968	↓ - 15.2%	97.0%	↓ - 0.4%	90	↑ + 37.9%	71	↑ + 44.9%
85286	\$200,000	↓ - 9.1%	\$219,659	↓ - 7.3%	98.3%	↑ + 0.8%	62	↑ + 3.3%	209	↑ + 13.0%
85295	\$152,830	↓ - 7.3%	\$183,060	→ - 0.1%	99.2%	↑ + 0.8%	55	↓ - 11.3%	239	↑ + 9.1%
85296	\$152,500	↓ - 10.5%	\$177,091	↓ - 8.6%	99.2%	↑ + 1.4%	67	↑ + 7.0%	296	↑ + 19.4%
85297	\$182,750	↓ - 6.5%	\$205,370	↓ - 7.4%	99.4%	↑ + 1.3%	67	↑ + 6.6%	182	↑ + 11.0%
85298	\$219,000	↓ - 4.8%	\$247,053	↓ - 5.4%	98.2%	↑ + 0.4%	74	↑ + 1.2%	159	↑ + 7.4%
85301	\$40,750	↑ + 9.3%	\$47,390	↓ - 2.6%	100.1%	↑ + 2.1%	57	↓ - 9.1%	180	↑ + 20.8%
85302	\$69,000	↓ - 23.3%	\$72,864	↓ - 19.9%	100.3%	↑ + 3.0%	59	↓ - 4.4%	218	↑ + 43.4%
85303	\$83,000	↑ + 1.3%	\$87,168	↓ - 2.7%	99.9%	↑ + 1.9%	68	↑ + 55.2%	161	↑ + 11.8%
85304	\$79,000	↓ - 4.2%	\$87,410	↓ - 14.6%	99.6%	↑ + 3.0%	64	↑ + 13.0%	169	↑ + 11.2%
85305	\$135,000	↑ + 2.7%	\$136,249	↓ - 0.6%	100.6%	↑ + 4.3%	53	↓ - 1.8%	85	↑ + 80.9%
85306	\$90,000	↓ - 10.0%	\$97,735	↓ - 7.9%	99.1%	↑ + 3.3%	59	→ - 0.0%	137	↑ + 52.2%
85307	\$74,580	↓ - 7.4%	\$79,784	↓ - 9.3%	99.8%	↑ + 3.6%	36	↓ - 21.2%	44	↑ + 46.7%
85308	\$136,900	↓ - 14.4%	\$159,686	↓ - 11.5%	98.0%	↑ + 0.6%	59	↑ + 0.8%	369	↑ + 33.2%
85310	\$158,000	↓ - 6.5%	\$183,519	↓ - 26.9%	98.0%	↑ + 0.9%	60	↓ - 13.7%	130	↑ + 26.2%
85320	\$83,500	→ 0.0%	\$89,442	→ 0.0%	77.4%	→ 0.0%	190	→ 0.0%	3	→ 0.0%
85322	\$41,310	↑ + 17.4%	\$41,310	↑ + 5.6%	95.9%	↓ - 7.5%	39	↓ - 18.8%	2	↓ - 66.7%
85323	\$85,000	↓ - 10.5%	\$90,555	↓ - 4.6%	99.3%	↑ + 1.5%	58	↑ + 2.3%	274	↑ + 29.9%
85326	\$76,500	↓ - 4.4%	\$84,769	↓ - 5.7%	100.0%	↑ + 2.1%	48	↓ - 18.8%	427	↑ + 4.9%
85331	\$287,500	↑ + 0.3%	\$303,477	↓ - 7.8%	97.0%	↑ + 0.3%	62	↓ - 22.6%	194	↑ + 26.0%
85335	\$65,750	↓ - 12.3%	\$70,969	↓ - 9.0%	99.7%	↑ + 1.6%	73	↑ + 31.1%	240	↑ + 24.4%
85337	\$44,200	↓ - 31.9%	\$40,675	↓ - 37.3%	91.1%	↓ - 8.9%	107	↑ + 2040.0%	4	↑ + 300.0%
85338	\$109,900	↓ - 12.1%	\$126,915	↓ - 11.7%	99.5%	↑ + 1.2%	54	↓ - 0.6%	371	↑ + 6.6%
85339	\$100,000	↓ - 12.3%	\$111,210	↓ - 9.5%	98.7%	↓ - 0.1%	72	↑ + 3.3%	401	↑ + 26.9%
85340	\$141,300	↓ - 8.8%	\$178,153	↓ - 8.5%	98.7%	↑ + 0.7%	55	↓ - 20.7%	187	↑ + 2.7%
85342	\$121,000	↑ + 51.4%	\$126,000	↑ + 5.6%	90.9%	↓ - 1.2%	91	↓ - 73.3%	4	↑ + 33.3%
85343	\$0	→ 0.0%	\$0	→ 0.0%	0.0%	→ 0.0%	0	→ 0.0%	0	→ 0.0%
85345	\$73,500	↓ - 9.6%	\$76,891	↓ - 8.3%	98.4%	↑ + 0.6%	64	↑ + 9.1%	374	↑ + 41.7%
85351	\$65,000	↓ - 23.3%	\$76,148	↓ - 12.0%	93.5%	↑ + 0.1%	97	↓ - 9.5%	213	↑ + 23.1%
85353	\$81,500	↓ - 14.2%	\$86,891	↓ - 10.3%	100.3%	↑ + 1.5%	71	↑ + 23.6%	319	↑ + 56.4%
85354	\$38,500	↓ - 19.8%	\$49,639	↓ - 8.9%	100.2%	↑ + 8.2%	51	↓ - 35.4%	35	↓ - 44.4%
85355	\$145,153	↓ - 14.6%	\$161,542	↓ - 10.1%	97.9%	↓ - 1.5%	62	↓ - 21.8%	95	↑ + 50.8%
85361	\$131,000	↑ + 4.9%	\$124,985	↑ + 12.6%	98.4%	↑ + 2.2%	101	↑ + 57.9%	43	↑ + 22.9%
85363	\$59,825	↑ + 27.1%	\$58,033	↓ - 4.9%	99.8%	↓ - 2.9%	50	↑ + 38.3%	44	↓ - 4.3%
85373	\$120,000	↓ - 11.1%	\$121,980	↓ - 10.2%	97.2%	↑ + 0.9%	86	↑ + 26.0%	133	↑ + 3.9%
85374	\$114,000	↓ - 2.1%	\$135,323	↓ - 2.3%	98.5%	↑ + 1.6%	75	↓ - 3.5%	277	↑ + 7.4%
85375	\$140,000	↓ - 6.0%	\$156,971	↓ - 8.0%	94.8%	↑ + 0.7%	105	↓ - 0.6%	201	↑ + 42.6%

# Marketwatch Report

## Q3-2011



# Maricopa County ZIP Codes Cont.

	Median Sales Price		Average Sales Price		Pct. of List Price Rec'd.		Days on Market		Closed Sales	
	Q3-2011	1-Yr Chg	Q3-2011	1-Yr Chg	Q3-2011	1-Yr Chg	Q3-2011	1-Yr Chg	Q3-2011	1-Yr Chg
85377	\$525,000	↑ + 6.2%	\$647,158	↑ + 7.0%	96.4%	↑ + 3.3%	164	↑ + 17.7%	25	↓ - 10.7%
85378	\$79,000	↑ + 229.2%	\$80,420	↑ + 235.1%	96.3%	↓ - 3.7%	68	↑ + 2165.9%	46	↑ + 4500.0%
85379	\$120,000	↓ - 5.3%	\$125,286	↓ - 7.1%	99.8%	↑ + 0.8%	57	↑ + 5.1%	371	↑ + 0.8%
85381	\$119,000	↓ - 10.5%	\$134,419	↓ - 9.5%	99.0%	↑ + 1.9%	65	↑ + 7.7%	157	↑ + 72.5%
85382	\$137,000	↓ - 9.8%	\$149,247	↓ - 7.6%	98.2%	↑ + 1.3%	65	↓ - 3.5%	265	↑ + 39.5%
85383	\$238,900	↑ + 3.9%	\$252,578	↓ - 4.7%	98.5%	↑ + 0.4%	63	↓ - 20.9%	329	↑ + 18.3%
85387	\$142,000	↓ - 11.3%	\$168,026	↓ - 15.2%	96.2%	↓ - 0.3%	73	↓ - 14.6%	60	↓ - 1.6%
85388	\$122,500	↓ - 4.3%	\$128,198	↓ - 6.0%	100.2%	↑ + 1.7%	62	↑ + 0.4%	249	↑ + 23.3%
85390	\$88,000	↓ - 16.2%	\$148,709	↓ - 2.7%	90.9%	↓ - 1.6%	135	↑ + 32.9%	25	↑ + 25.0%
85392	\$100,000	↓ - 10.0%	\$106,954	↓ - 11.3%	100.0%	↑ + 1.8%	53	↓ - 0.5%	242	↑ + 20.4%
85395	\$186,000	↓ - 8.8%	\$197,304	↓ - 6.4%	98.2%	↑ + 0.9%	76	↑ + 6.1%	177	↑ + 53.9%
85396	\$122,000	↓ - 25.2%	\$136,171	↓ - 27.7%	98.1%	↑ + 0.9%	83	↓ - 1.3%	149	↑ + 7.2%

# Marketwatch Report

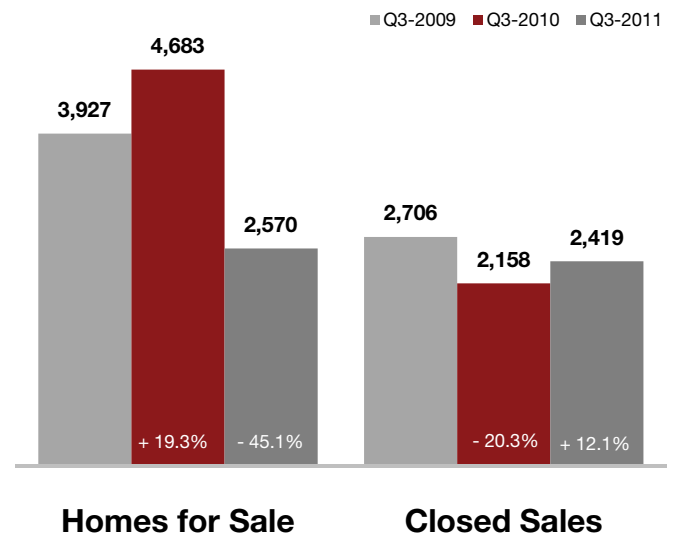
## Q3-2011



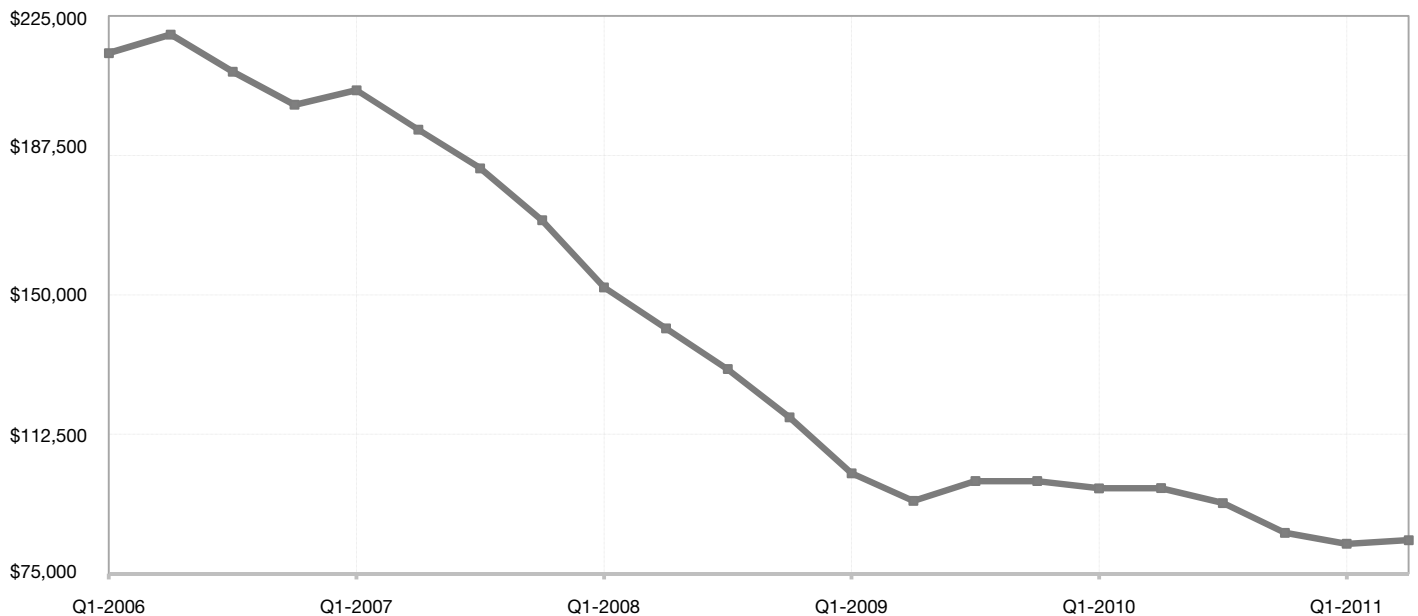
## Pinal County

Key Metrics	Q3-2011	1-Yr Chg
Median Sales Price	\$85,000	- 9.6%
Average Sales Price	\$97,270	- 8.3%
Pct. of List Price Rec'd.	98.8%	+ 1.5%
Homes for Sale	2,570	- 45.1%
Closed Sales	2,419	+ 12.1%
Months Supply	2.9	- 47.9%
Days on Market	63	- 0.8%

## Market Activity



## Historical Median Sales Price for Pinal County



# Marketwatch Report

## Q3-2011



# Pinal County ZIP Codes

	Median Sales Price		Average Sales Price		Pct. of List Price Rec'd.		Days on Market		Closed Sales	
	Q3-2011	1-Yr Chg	Q3-2011	1-Yr Chg	Q3-2011	1-Yr Chg	Q3-2011	1-Yr Chg	Q3-2011	1-Yr Chg
85118	\$189,900	↑ + 0.7%	\$243,339	↓ - 1.0%	95.0%	↓ - 1.4%	75	↓ - 5.0%	75	↓ - 9.6%
85119	\$79,100	↓ - 8.0%	\$115,852	↓ - 11.0%	97.9%	↑ + 0.5%	55	↓ - 0.8%	77	↓ - 9.4%
85120	\$72,000	↓ - 15.2%	\$77,785	↓ - 12.3%	98.8%	↑ + 2.3%	50	↓ - 3.3%	95	↑ + 10.5%
85122	\$85,000	↓ - 7.3%	\$88,650	↓ - 2.7%	98.1%	↑ + 0.6%	63	↑ + 22.2%	267	↑ + 14.1%
85123	\$53,750	↑ + 3.4%	\$52,813	↓ - 8.2%	97.0%	↓ - 1.9%	59	↑ + 46.9%	81	↑ + 12.5%
85128	\$55,000	↓ - 14.4%	\$57,617	↓ - 16.5%	99.0%	↑ + 2.9%	47	↓ - 19.2%	81	↑ + 22.7%
85131	\$28,300	↓ - 0.7%	\$53,671	↓ - 21.5%	95.3%	↑ + 4.0%	54	↓ - 33.5%	19	↓ - 20.8%
85132	\$67,000	↓ - 2.5%	\$80,742	↓ - 7.7%	97.1%	↓ - 0.8%	85	↑ + 51.5%	139	↑ + 20.9%
85137	\$17,500	↓ - 41.7%	\$17,500	↓ - 45.8%	87.9%	↑ + 2.5%	191	↑ + 1.2%	1	↓ - 66.7%
85138	\$86,000	↓ - 18.1%	\$96,406	↓ - 13.9%	100.5%	↑ + 3.4%	59	↓ - 2.9%	449	↑ + 36.9%
85139	\$84,000	↓ - 1.2%	\$90,596	↓ - 5.0%	99.6%	↑ + 1.7%	64	↑ + 15.6%	192	↑ + 38.1%
85140	\$88,600	↓ - 15.6%	\$93,694	↓ - 16.3%	99.1%	↑ + 0.9%	51	↓ - 18.4%	270	↑ + 26.2%
85142	\$135,000	↓ - 3.4%	\$156,649	↓ - 2.9%	98.6%	↑ + 0.7%	58	↑ + 2.0%	383	↑ + 16.8%
85143	\$93,000	↓ - 4.1%	\$100,326	↓ - 5.0%	99.9%	↑ + 2.1%	60	↑ + 5.8%	441	↑ + 31.6%
85145	\$82,900	→ 0.0%	\$90,414	→ 0.0%	99.8%	→ 0.0%	24	→ 0.0%	7	→ 0.0%
85172	\$43,000	↓ - 72.3%	\$70,400	↓ - 43.2%	91.7%	↓ - 2.8%	17	↓ - 69.5%	3	↓ - 40.0%
85173	\$33,500	↓ - 14.0%	\$28,625	↓ - 26.5%	102.3%	↑ + 6.7%	72	↓ - 28.8%	4	↑ + 100.0%
85193	\$51,000	↑ + 13.3%	\$79,226	↑ + 18.0%	95.4%	↑ + 0.8%	113	↑ + 2.7%	7	↓ - 36.4%
85194	\$141,500	↓ - 14.8%	\$128,946	↓ - 19.2%	96.0%	↓ - 2.6%	82	↑ + 32.8%	16	↓ - 20.0%
85213	\$122,000	↓ - 13.2%	\$166,995	↓ - 20.4%	97.8%	↑ + 1.6%	67	↑ + 2.6%	140	↑ + 12.9%
85215	\$133,750	↓ - 21.3%	\$169,487	↓ - 16.9%	95.7%	↓ - 1.1%	99	↑ + 31.5%	80	↑ + 35.6%
85218	\$357,500	↑ + 177.1%	\$357,500	↑ + 62.5%	94.5%	↑ + 2.3%	292	↑ + 43.7%	2	↓ - 71.4%
85219	\$79,495	↓ - 36.9%	\$103,799	↓ - 23.8%	94.1%	↓ - 8.2%	198	↑ + 49.1%	8	↑ + 14.3%
85220	\$73,250	↑ + 12.7%	\$79,772	↑ + 23.5%	97.7%	→ - 0.0%	66	↓ - 32.6%	18	↓ - 21.7%
85222	\$35,450	↓ - 59.7%	\$48,475	↓ - 40.8%	86.2%	↓ - 12.2%	277	↑ + 139.1%	4	↓ - 82.6%
85223	\$51,000	↑ + 36.0%	\$51,000	↑ + 22.0%	99.6%	↓ - 1.2%	88	↑ + 9.1%	2	↓ - 77.8%
85228	\$0	↓ - 100.0%	\$0	↓ - 100.0%	0.0%	↓ - 100.0%	0	↓ - 100.0%	0	↓ - 100.0%
85232	\$40,000	↓ - 37.5%	\$47,633	↓ - 41.6%	99.9%	↑ + 3.1%	25	↓ - 82.3%	3	↓ - 76.9%
85238	\$74,750	↓ - 10.5%	\$86,875	↓ - 6.1%	97.3%	↑ + 2.7%	133	↑ + 22.3%	4	↓ - 82.6%
85239	\$67,000	↓ - 20.9%	\$74,718	↓ - 15.8%	96.1%	↑ + 2.1%	174	↑ + 120.9%	11	↓ - 57.7%
85240	\$297,000	↑ + 227.3%	\$297,000	↑ + 149.5%	88.7%	↓ - 7.1%	82	↓ - 54.5%	1	↓ - 92.9%
85242	\$124,500	↑ + 19.2%	\$149,696	↑ + 3.0%	98.1%	↑ + 0.5%	97	↓ - 11.6%	19	↓ - 62.0%
85243	\$85,200	↓ - 2.6%	\$85,200	↓ - 17.9%	101.4%	↑ + 2.8%	227	↑ + 89.9%	2	↓ - 89.5%
85245	\$0	→ 0.0%	\$0	→ 0.0%	0.0%	→ 0.0%	0	→ 0.0%	0	→ 0.0%
85273	\$0	↓ - 100.0%	\$0	↓ - 100.0%	0.0%	↓ - 100.0%	0	↓ - 100.0%	0	↓ - 100.0%
85623	\$0	→ 0.0%	\$0	→ 0.0%	0.0%	→ 0.0%	0	→ 0.0%	0	→ 0.0%